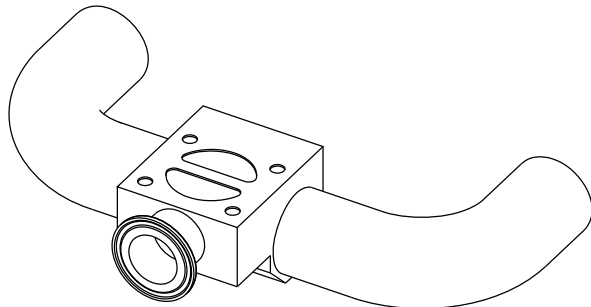
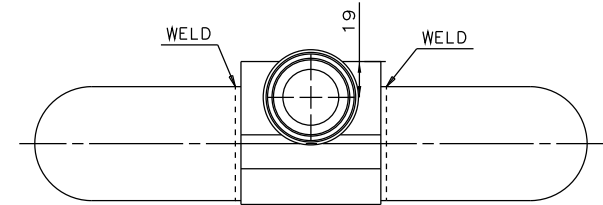
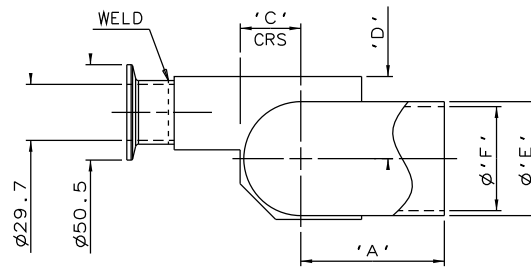
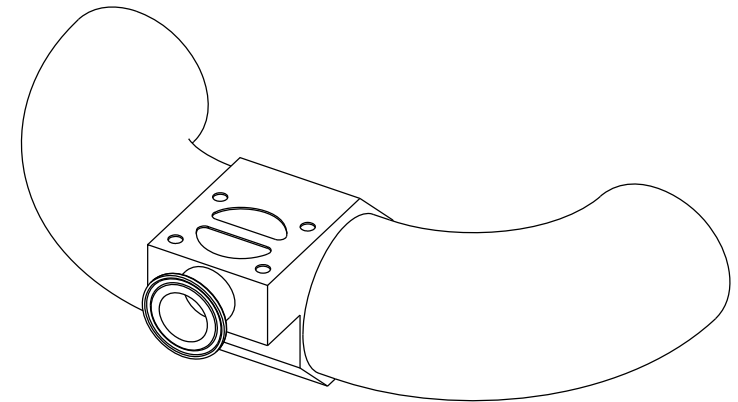
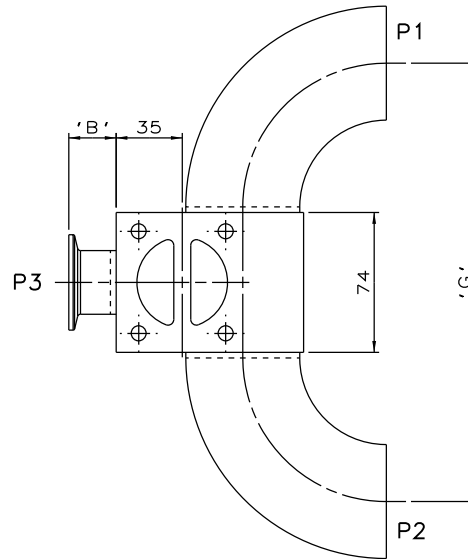


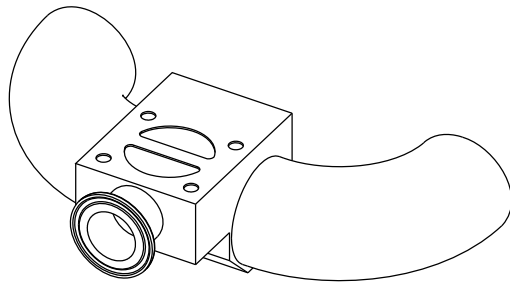
DN25 MAINLINE ONLY



DN32 TO DN40
MAINLINE ONLY

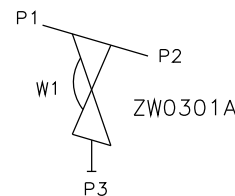


DN65 TO DN100
MAINLINE ONLY



DN50 MAINLINE ONLY

| MAINLINE SIZE | A | B | C | D | ϕE | ϕF | G | BODY WEIGHT |
|---------------|-------|------|------|------|----------|----------|-------|-------------|
| mm | mm | mm | mm | mm | mm | mm | mm | Kgs |
| DN25 | 78.0 | 25.0 | 18.9 | 32.0 | 33.7 | 29.7 | 236.0 | 2.0 |
| DN32 | 87.5 | 25.0 | 23.2 | 38.0 | 42.4 | 38.4 | 255.0 | 2.4 |
| DN40 | 97.0 | 25.0 | 28.9 | 38.0 | 48.3 | 44.3 | 274.0 | 2.5 |
| DN50 | 76.0 | 25.0 | 32.1 | 43.5 | 60.3 | 55.1 | 232.0 | 2.8 |
| DN65 | 95.0 | 25.0 | 39.5 | 49.0 | 76.1 | 70.9 | 284.0 | 3.3 |
| DN80 | 114.0 | 25.0 | 45.9 | 53.0 | 88.9 | 83.7 | 322.0 | 4.2 |
| DN100 | 152.0 | 25.0 | 58.6 | 60.2 | 114.3 | 109.1 | 398.0 | 5.9 |



ORIENTATION AS PER
P&ID DIAGRAM FOR
OPTIMUM DRAINABILITY.

The information on this sheet is Private and Confidential and is the property of Crane Process Flow Technologies Limited and must not be published directly or indirectly in any manner whatsoever without the written permission of the Company and must not be used in any way detrimental to their interests.
© Crane Process Flow Technologies

CRANE Process Flow Technologies
A Crane Co. Company

Saunders
The Science Inside

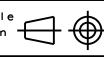
Title SCHEDULE OF LEADING DIMENSIONS FOR
DN25 WEIR POINT OF USE 'T' BODY WITH :
MAINLINE : ISO 1127 S1 BUTT WELD ENDS
BRANCH : DN25 HYGIENIC CLAMP END WITH
ISO 1127 S1 BORE

Drawn R1 Date 17.04.12

Checked RND Date 17.04.12

UNCONTROLLED IN
HARD COPY FORMAT

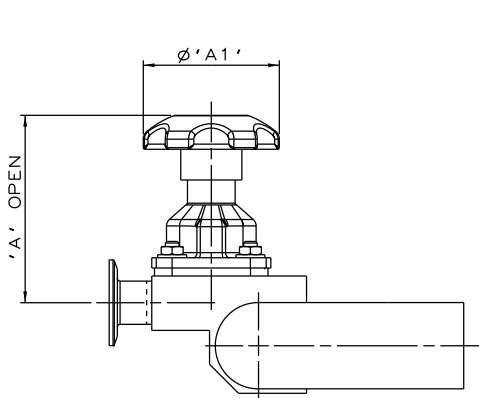
First Angle
Projection
Method E



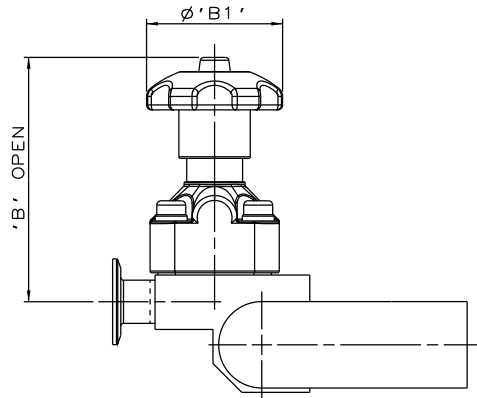
DO
NOT
SCALE

Drawing No.
WEB-187

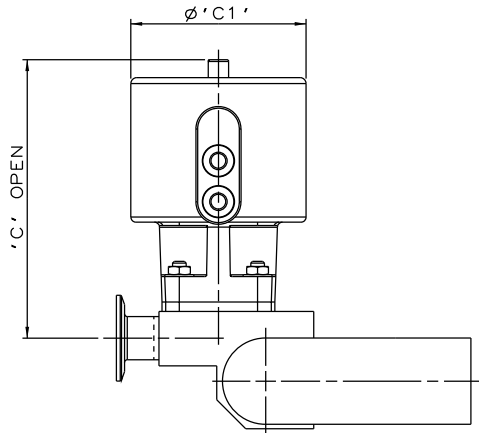
Issue.
1



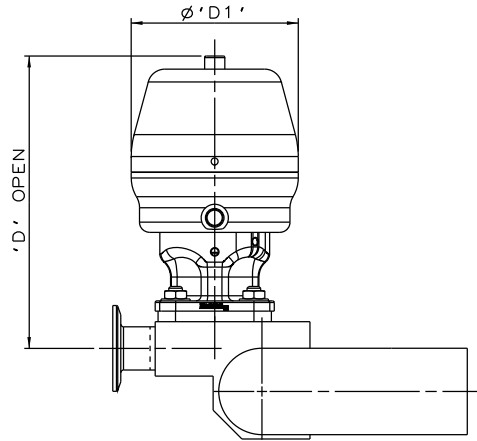
SS NON SEALED
BONNET ASSEMBLY



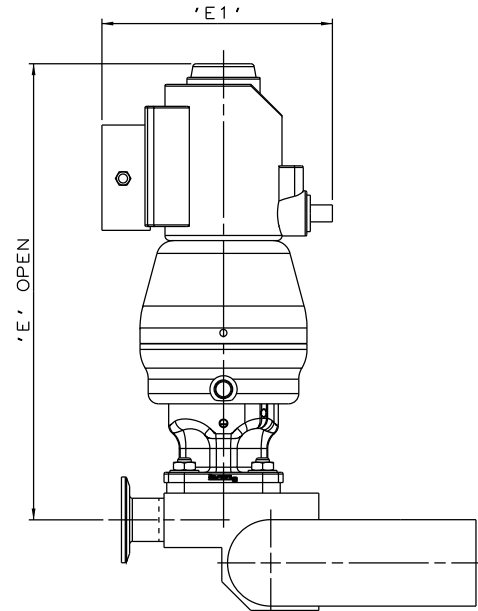
PES BONNET
ASSEMBLY



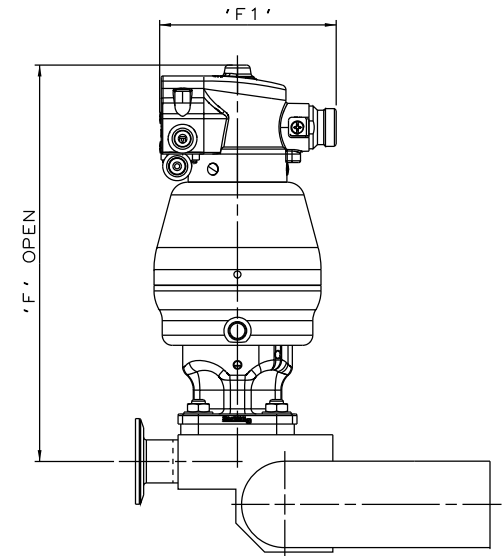
EC ACTUATOR
(ALL MODES)



*S360 ACTUATOR



*S360 ACTUATOR
WITH I-VUE SENSOR



*S360 ACTUATOR
WITH M-VUE SENSOR

The information on this sheet is Private and Confidential and is the property of Crane Process Flow Technologies Limited and must not be published directly or indirectly in any manner whatsoever without the written permission of the Company and must not be used in any way detrimental to their interests.
© Crane Process Flow Technologies

CRANE Process Flow Technologies
A Crane Co. Company

Saunders
The Science Inside

Title
SCHEDULE OF LEADING DIMENSIONS FOR DN25/1.00
WEIR 'T' BODY WITH MAINLINE BUTT WELD ISO 1127 S1
ENDS, BRANCH HYGIENIC CLAMP END WITH ISO 1127 S1 BORE,
FITTED WITH TOPWORKS OPTIONS

| | | | | |
|---------|-----|------|----------|-------------------------------------|
| Drawn | RI | Date | 09.05.17 | UNCONTROLLED IN HARD COPY FORMAT |
| Checked | RND | Date | 09.05.17 | |

| | | | | |
|---------------------------------------|--|--------------------|-----------------------------|-------------|
| First Angle Projection Method E | | DO NOT SCALE | Drawing No. WEB-187-ASSY | Issue. 1 |
|---------------------------------------|--|--------------------|-----------------------------|-------------|

*DIMENSIONS SHOW MAXIMUM ENVELOPE FOR ALL MODES

| BRANCH SIZE | | A | | A1 | | B | | B1 | | C | | C1 | | D | | D1 | | E | | E1 | | F | | F1 | |
|-------------|------|-------|------|------|------|-------|------|------|------|-------|------|-------|------|-------|------|------|------|-------|-------|-------|------|-------|------|-------|------|
| mm | inch | mm | inch | mm | inch | mm | inch | mm | inch | mm | inch | mm | inch | mm | inch | mm | inch | mm | inch | mm | inch | mm | inch | mm | inch |
| DN25 | 1.00 | 113.0 | 4.45 | 80.0 | 3.15 | 147.0 | 5.79 | 80.0 | 3.15 | 167.0 | 6.57 | 103.0 | 4.05 | 175.0 | 6.89 | 98.0 | 3.87 | 272.0 | 10.71 | 136.0 | 5.35 | 236.0 | 9.29 | 103.8 | 4.09 |